

Focus On: The Postgraduate Student Experience

Morven Stewart

Development Consultant | sparqs



 @sparqs_scotland

Introduction



- Postgraduate research students have to navigate a challenging journey along which learning and research are inextricably combined.
- Students must grapple not only with their own independent study, but also with the need to develop appropriate research and employability skills.
- In order to thrive, they need to develop effective relationships with supervisors, mentors and peers.



[@sparqs_scotland](https://twitter.com/sparqs_scotland)

Focus On: The Postgraduate Student Experience – sparqs



Engaging Postgraduate students to promote and enhance their own learning, and their wider learning experience.

<http://enhancementthemes.ac.uk/focus-on/postgraduate-research-student-experience>

Activities and Outputs: (Number 6 of 7)

work with students' associations and sparqs (Student Partnerships in Quality Scotland) on student representation for PGRs



@sparqs_scotland

Focus On: The Postgraduate Research (PGR) Student Experience (2016-17)



Priority areas are:

- Training and support for postgraduate students who teach
- Support for staff who supervise research students
- Building a research community for postgraduate research students
- Student representation for postgraduate research students



@sparqs_scotland

Challenges



- Ownership of the rep system
- Relationship with institutional staff
Colleague versus student - Student issue versus staff issue
- Individual versus collective
What is the collective experience and how can you draw on it?
- Lack of basic understanding of the PGR experience / key issues
- Lack of infrastructure
- Making the role relevant
- No coherent cohorts - Inductions



@sparqs_scotland

Areas for Development



Training Materials



- sparqs recently produced programme specific materials for PGT representation:

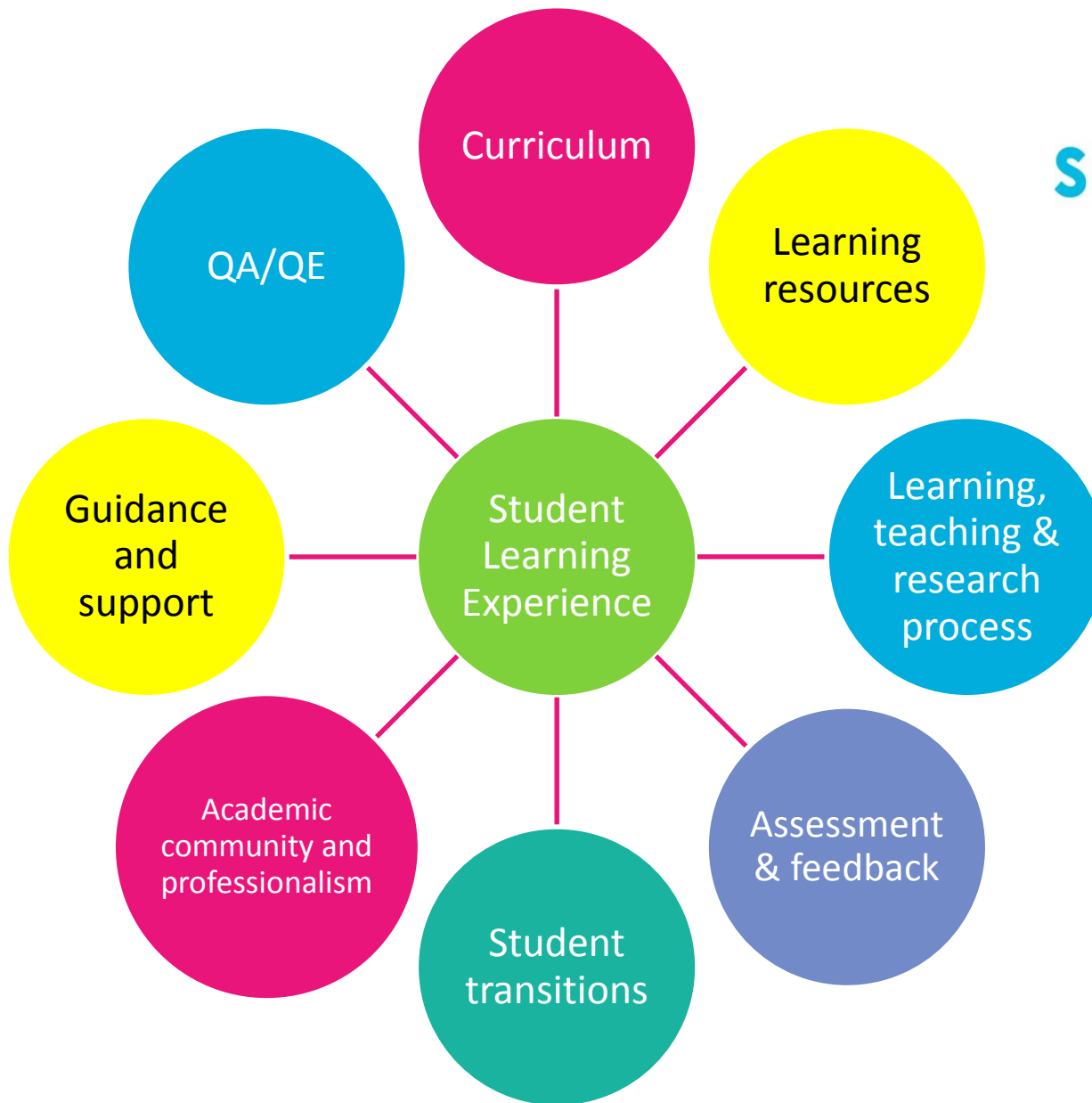
Training for Taught Postgraduate Course Representatives

This was the result of a 2 year project.

The student learning experience is very different for this group of students compared to the student learning experience of undergraduates. This was reflected in the materials.



[@sparqs_scotland](https://twitter.com/sparqs_scotland)



Next Steps



Looking to set up a working group made up of students and staff from:

- Graduate Schools
- Students Associations
- PGR student body
- Subject specific



@sparqs_scotland

Focus On: The Postgraduate Student Experience



For any further information on the support available from sparqs around the *Postgraduate Student Experience* then please contact:

Morven Stewart, Development Consultant, sparqs
morven.stewart@sparqs.ac.uk

For any further information on the Taught Postgraduate Course Rep Training please contact:

Simon Varwell, Development Consultant, sparqs
Simon.varwell@sparks.ac.uk

Thank you!



@sparqs_scotland