

Developing Postgraduate Research Student Engagement @ GCU

A Case Study

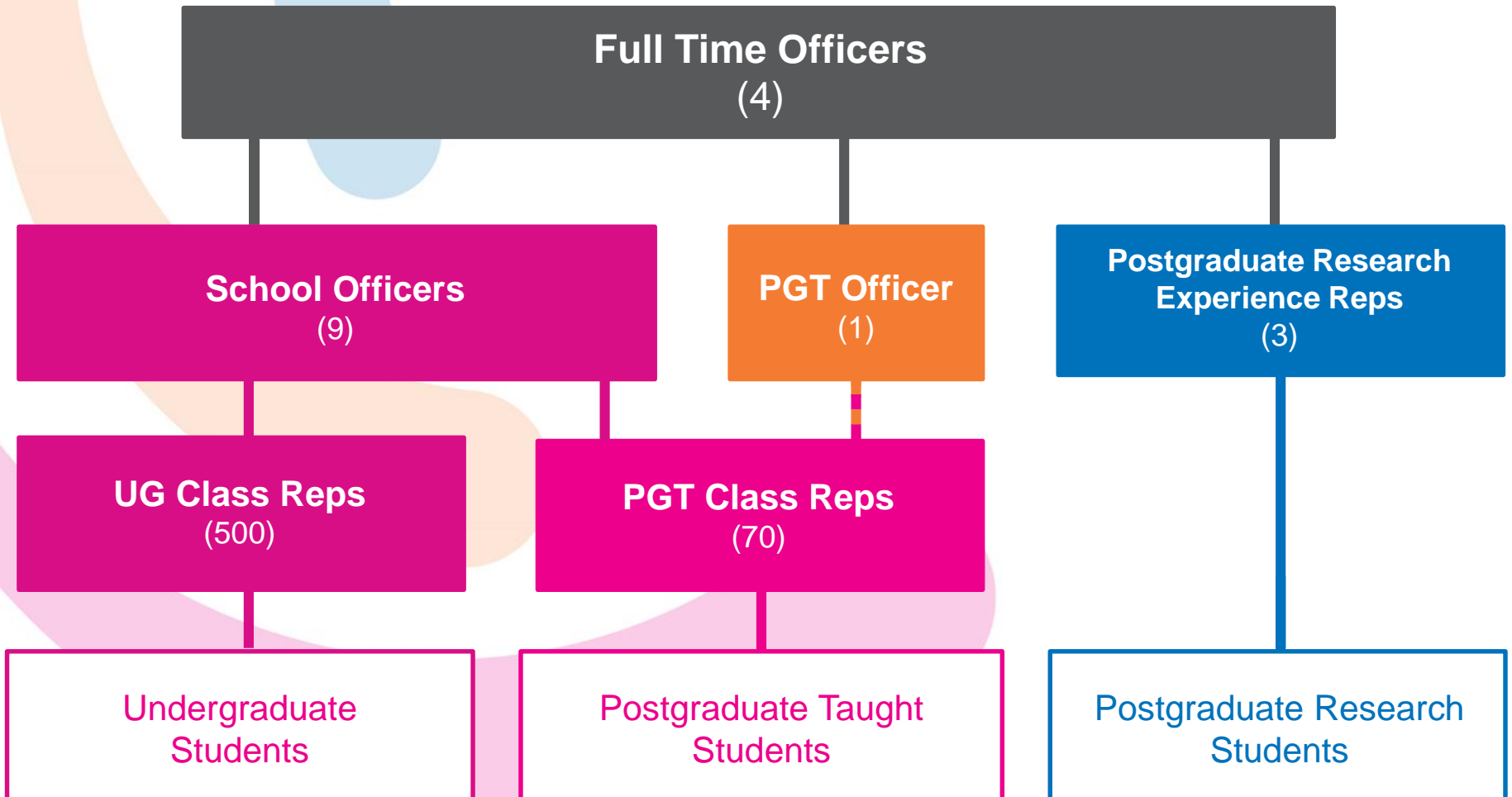
Chris Daisley

Vice President (SEBE)

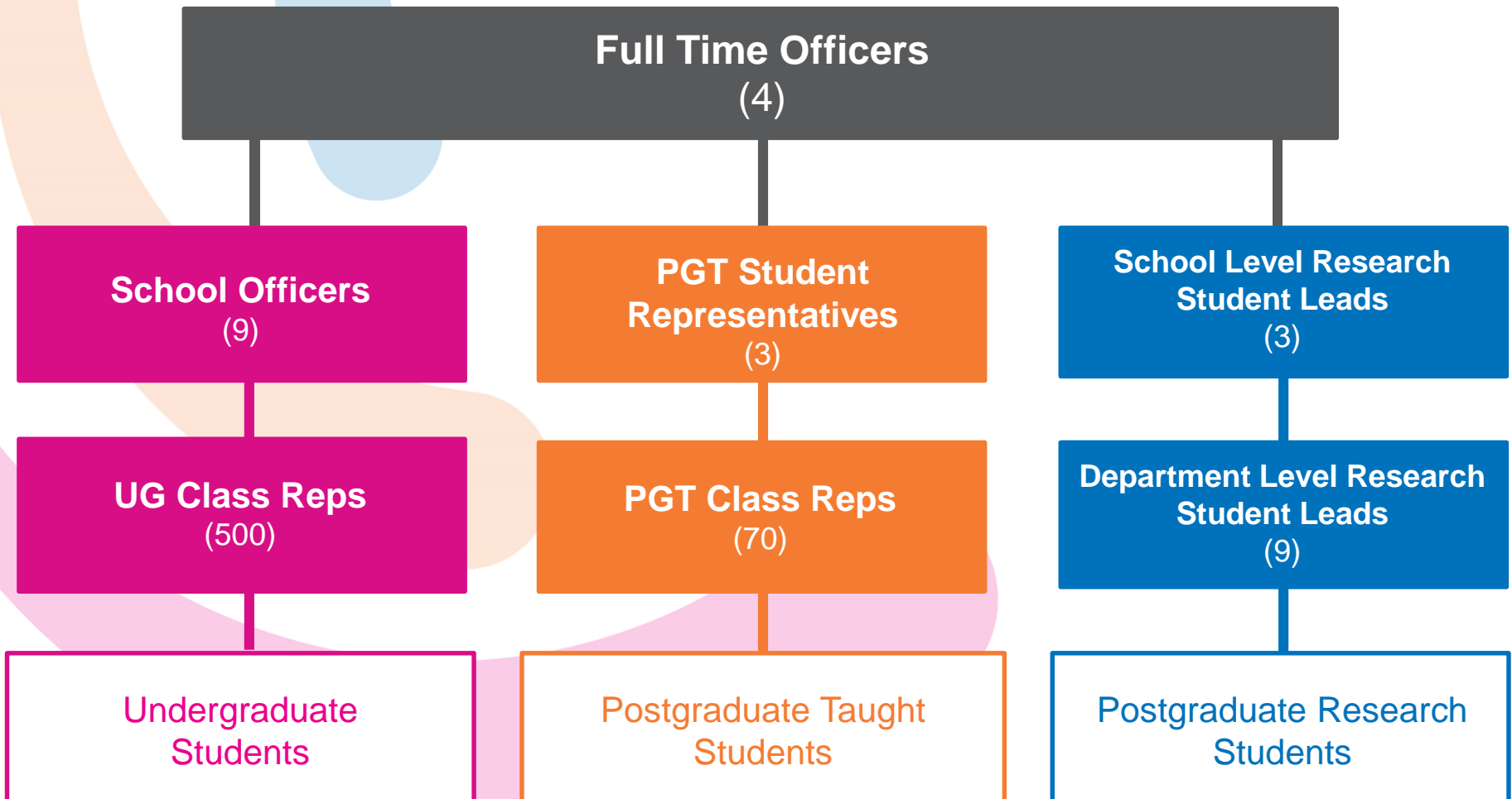
Paul Stalker

Student Voice Co-ordinator

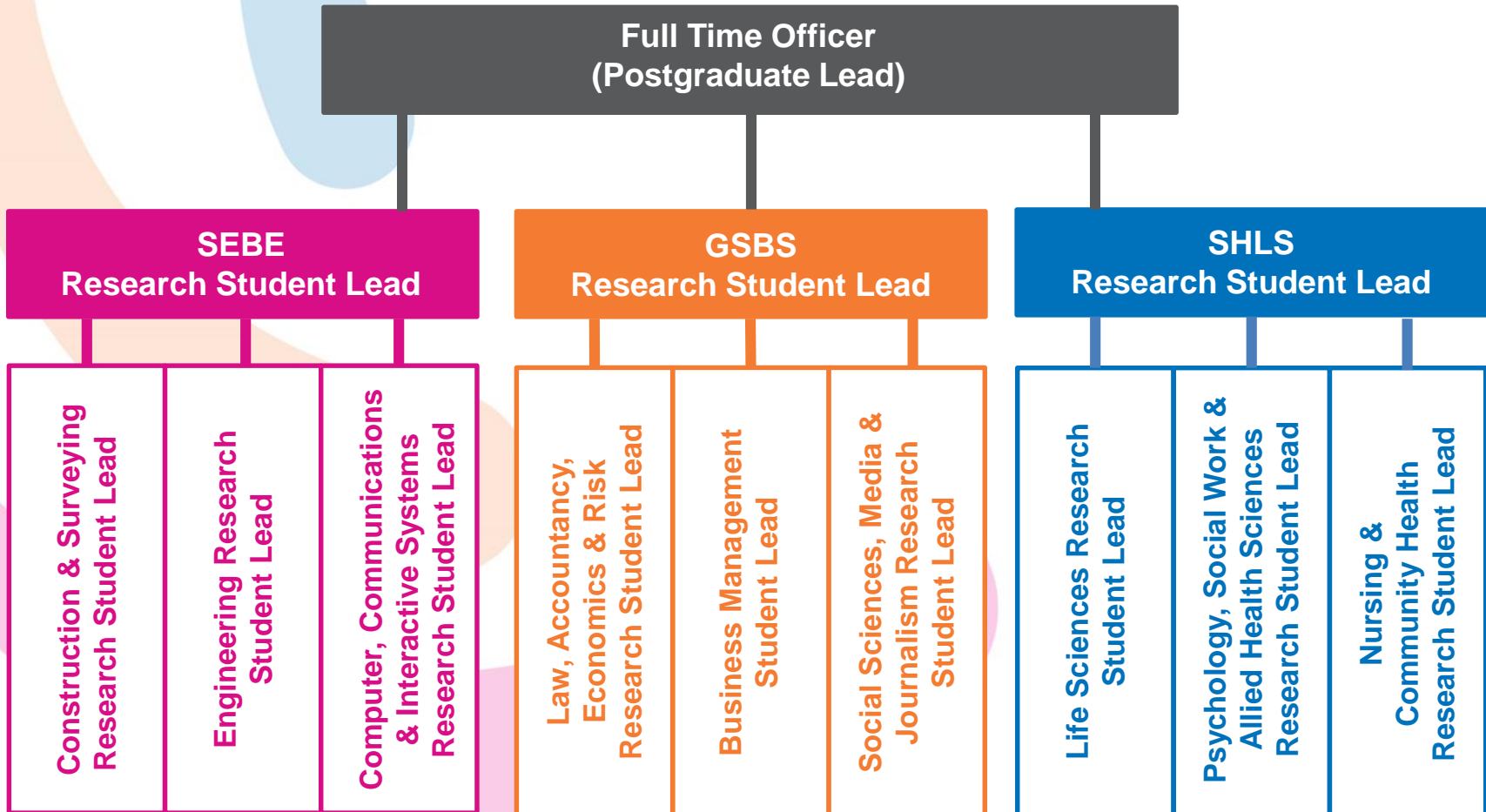
Old Academic Representation Structure



Current Academic Representation Structure



Research Student Leads Structure



Research Student Leads Roles



Department Level

- To communicate and feedback regularly with all the Postgraduate Research Students within your Department.
- To attend and take an active part in Department Research Committee and School Committee Research Committee meetings.
- To communicate regularly with the other Research Student Leads within your School and with GCU Students' Association's Full Time Officer Postgraduate Lead.
- To help with and promote Postgraduate events.
- To help with and promote Postgraduate campaigns.

School Level

- To support as well as communicate and feedback regularly with the Department Level Research Student Leads in your School as well the other School Level Research Students and Full Time Officer Postgraduate Lead.
- To attend and take an active part in University Research Committee, Research Degrees Committee and School Research Committee meetings.
- To attend and take an active part in Student Action Group for Engagement (SAGE) and Student Voice meetings.
- To help with and promote Postgraduate events.
- To help with and promote Postgraduate campaigns.



'Political' support for the Research Student Leads is provided by the Full Time Officer Postgraduate Lead.

'Operational' support for the Research Student Leads is provided by a staff member from the Student Voice Team.

- Research Student Leads Induction Training
- Bi-Trimester Catch-Up Meetings
- Pre-Meeting Support Catch-Ups
- Research Student Leads Facebook Group
- GCU Students' Association Research Students Flyer
- Handover Documents



Here to represent you

GCU Students' Association is keen to make sure that the University hears and acts on the needs of its Postgraduate Research Students!

Your representatives...

Research Student Leads help drive improvements to your student experience by making sure that both the University and the Students' Association know about and take action on the issues that are affecting Postgraduate Research Students.

If you're an eligible Postgraduate Research Student, get in touch with your Research Student Lead to get more about:

 Ashley Ann Adams L16 36 1199 Research Student Lead Research Students' Association	 Julia Blair Psychology, Social Work & Health Care Ash 0141 554 1199 Research Student Lead Research Students' Association	 Lorraine Booth Marketing & Communications Lorraine Booth Research Student Lead Research Students' Association
--	--	---

Run by students like you...

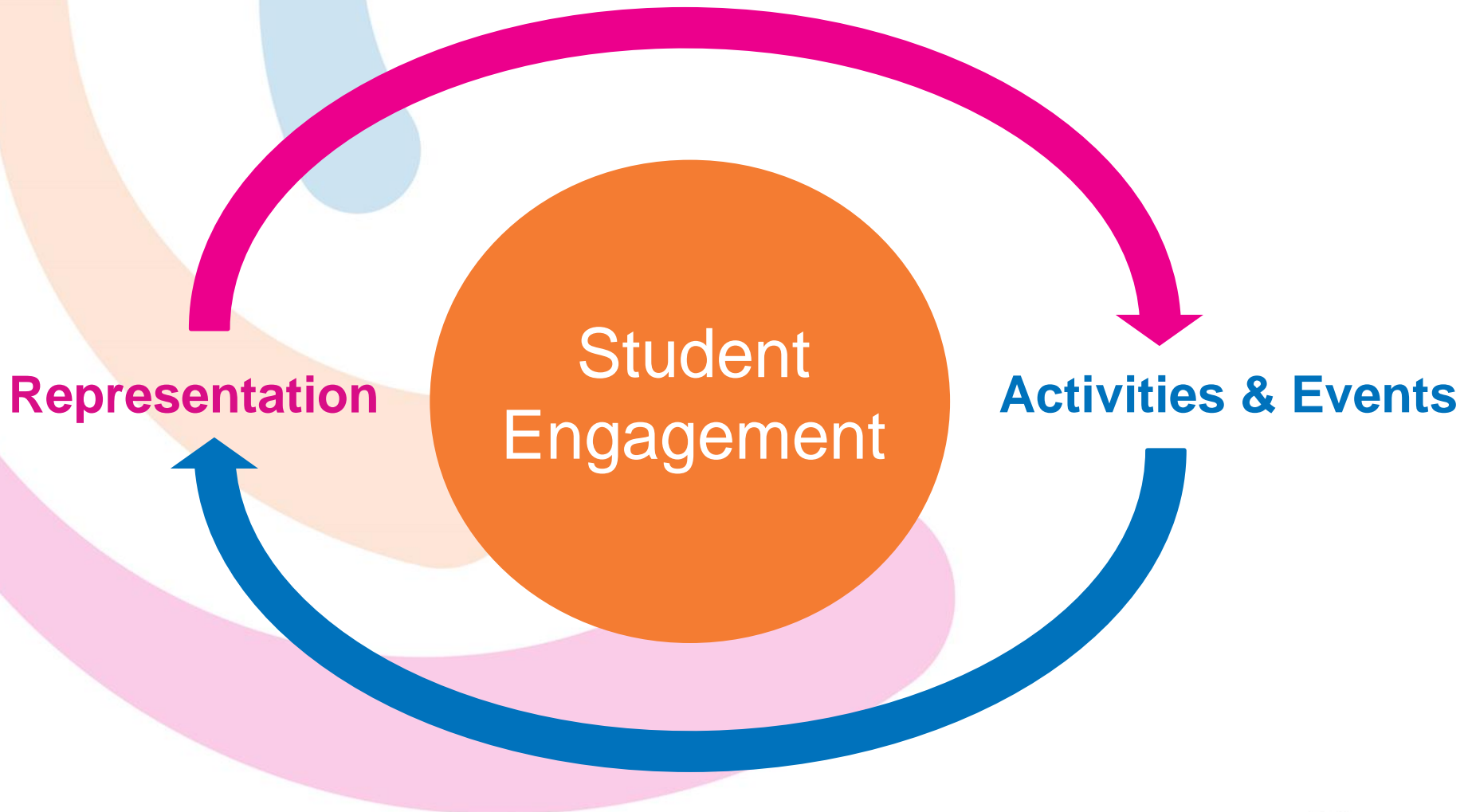
GCU Students' Association is led by four elected students known as Full Time Officers. It is essential to bring members of the Student Association's Executive Team in. The body is made up of elected representatives for the University's Postgraduate Research Students. Full Time Officers are responsible for taking a lead in campaigns to be elected to the Executive Team.

You can find out more about your Full Time Officers and their campaigns to improve your student experience at www.gcustudents.co.uk/association.

More details can be found on the GCU website. www.gcu.ac.uk or contact us on 0141 554 1199.

GCU Students' Association

Generating Student Engagement



Generating Student Engagement

**Postgraduate
Representation**

**Postgraduate
Research Student
Engagement**

**Postgraduate
Activities & Events**

Over the last two years GCU Students' Association has been running a programme of Postgraduate only social activities and events to provide an opportunity for new and existing Postgraduate Students to meet each other.

- Postgraduate Challenge
- Postgraduate Afternoon Tea
- Postgraduate Burns Night
- Postgraduate Christmas Party
- Postgraduate Quiz Nights
- Postgraduate Film Nights



Looking Back...

- It's an 'Urban Myth' that Postgraduates are not interested in engaging with Students' Associations/ Unions. You can develop engagement with Postgraduates provided you create the 'right offer' for them.
- There is a 'Symbiotic Relationship' between Postgraduate Representation and Postgraduate Activities & Events.
- Developing Postgraduate Student engagement is resource intensive. Additional resources are required in order to develop Postgraduate engagement to a sustainable level.

Looking Forward...

There are a number of challenges and barriers to further developing Postgraduate Research Student engagement at GCU. They include...

- Lack of resources
- Taught/ Research categorisation of students
- 'Utilitarian Approach' to events, communications & marketing